

# THE QUEBE SISTERS



# JULY 30 7 PM



GET YOUR TICKETS AT  
[WWW.JCOPERAHOUSE.ORG](http://WWW.JCOPERAHOUSE.ORG)  
OR CALL 785-238-3906!





# C.L. Hoover Opera House Lobby Series



## Harmony Junction



**UNCLE STEVE**



**North Forty**  
Bluegrass & Gospel Band

**SATURDAY, SEPTEMBER 11TH**



A SHOWCASE PERFORMANCE, HIGHLIGHTING YOUR  
FAVORITE LOCAL ARTISTS, FEATURING FOLK, BLUEGRASS,  
COUNTRY, COWBOY AND ALL THINGS AMERICANA!

JCOPERAHOUSE.ORG  
785-238-3906



**\$10 AT THE DOOR**  
**135 W. 7TH ST., JUNCTION CITY, KS 66441**

**ROBERT F. RODRIGUEZ**  
**JAZZ COMBO**  
**OCTOBER 1 7PM**

**BOB'S**  
PLUMBING AND HEATING, INC.

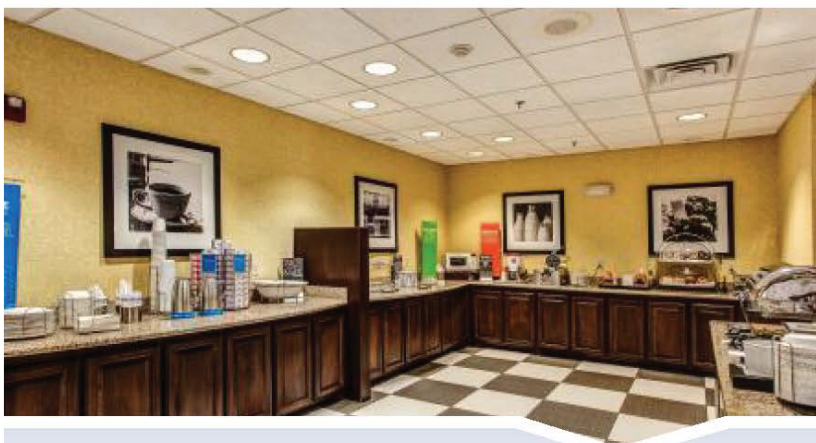
Craft   
Dentistry  
(785) 223-4210

GATHERINGS  
AT 3 THIRTEEN





**Hampton Inn by Hilton**



**Our performers stay at the Hampton Inn in Junction City!**

**You should too! They will treat you like a star!**

**1039 S. Washington Street, Junction City, KS, 66441**

**785-579-6950**





 <p><i>C.L. Hoover</i> <b>OPERA HOUSE</b> JUNCTION CITY, KS</p> <p>135 W 7th St, Junction City, KS 66441</p> <p><a href="http://www.jcoperahouse.org">www.jcoperahouse.org</a> 785-236-3906</p>	 <p><b>COMEDIAN ETTA MAY</b> <b>NOVEMBER 18</b></p>	 <p><b>1ST INFANTRY DIVISION BAND HOLIDAY CONCERT</b> <b>DECEMBER 10, 11, 12</b></p>	 <p><b>KANSAS CITY JAZZ ORCHESTRA</b> <b>DECEMBER 18</b></p>	 <p><b>PROUDLY OFFERING MILITARY AND SENIOR DISCOUNTS</b> <b>FAMILY-FRIENDLY SHOWS • LIVE ENTERTAINMENT • HISTORIC TOURS</b></p>
 <p><b>BUCKETS N BOARDS</b> <b>MARCH 4</b></p>	 <p><b>THE KANSAS BALLET</b> <b>MARCH 24</b></p>	 <p><b>CHRIS PERONDI'S STUNT DOG'S EXPERIENCE</b> <b>APRIL 10</b></p>	<p><i>Harmony Junction</i> <b>SEPTEMBER 11</b></p> <p><b>JAZZ AT THE UNCTION</b> <b>OCTOBER 1</b></p>	

# JUNCTION CITY LITTLE THEATER

135 7TH STREET  
JUNCTION CITY KS

785.238.3871  
[JCLITTLETHEATER.ORG](http://JCLITTLETHEATER.ORG)





**Cinderella**  
AUGUST 20-22  
& 27-29 2021



**MAMMA  
MIA!**  
NOVEMBER 4-7  
& 11- 14 2021



**Clue**  
FEBRUARY 4-6  
& 11-13 2022



**PETER AND THE STAR  
CATCHER**  
APRIL 22-24 & 29-30  
& MAY 1 2022

**RESERVE YOUR TICKETS TODAY!**  
**785.238.3906**





**AUGUST**

**13-15**

**20-22**

SPONSORED BY



**Choose Your Seats Online**

[www.columbiantheatre.com](http://www.columbiantheatre.com)

Box Office / 785.456.2029

Admission: \$25 • Military/Student: \$20

**BENEFIT NIGHT AUG. 13**

Hosted by the Friends of the Library

Dessert & Show \$35

All proceeds benefit programming at the Wamego Public Library.

**ALL TICKETS ON  
SALE JULY 1<sup>ST</sup>!**

**Upcoming  
Shows!**

Seeing **ONCE**, seeing  
**TWICE**,  
**GONE!**

Sept. 24-25 Oct. 1-2

**MONSTERS**  
*in the night*

October 23

**All  
Together  
Now!**

Nov. 10-19



Dec. 16-19

*The  
Wedding  
Life*

Dec. 31-12



Dec. 31

**WELCOME  
BACK HOME**  
*Again!*

**61st  
Season!**

Hope to  
see you  
soon!

**GREAT  
SHOWS!**

**SO  
EXCITED!**

**COME  
SEE US!**

**FUN  
SEASON!**



SEPTEMBER



OCTOBER



NOV/DEC



JANUARY



FEBRUARY



APRIL



JUNE

**SALINA COMMUNITY THEATRE**

**RESERVE YOUR TICKETS TODAY!**



785.827.3033 | 303 E. IRON AVE. | [SALINATHEATRE.COM](http://SALINATHEATRE.COM) | SALINA, KS



# Welcome to the C. L. Hoover Opera House!

Welcome back to the C. L. Hoover Opera House. We are sooooo excited to have you here. Our sponsor for tonight's show is the Geary County Convention and Visitors Bureau. After this past year we are pleased and grateful to be able to gather together and share good times. We ask that unvaccinated patrons wear a mask for their own protection as well as our other patrons.

We know you are in for a wonderful evening with the Quebe Sisters. Their beautiful harmony, great fiddling and infectious energy will leave you wanting more.

Exciting things are happening at the Opera House. This year we are expanding our education program by offering preschool classes as well as private lessons in voice, piano, dance and theater. We will also continue with our after school theater program for middle school youth: ASTRA.

Be sure to get your tickets for comedian Etta May in November. This a family friendly show that is sure to leave you laughing. But, before that, the Junction City Little Theater will be presenting two musicals, *Rogers and Hammerstein's Cinderella* in August, and *Mamma Mia!* in November. Please check out our website at: [jcoperahouse.org](http://jcoperahouse.org) to see the full list of the great entertainment available at the C.L. Hoover Opera House. And check back often because we are adding programs as the year progresses.

Joe & Sheila Markley, Directors

C. L. Hoover Opera House

Handwritten signatures of Joe Markley and Sheila J. Markley in black ink.

# **2021-2022 Business Partners Platinum (\$5,000+)**

Central National Bank

Creative Arts Industries Commission

Hampton Inn

Hoover-Koken Foundation

Jellison Foundation

R2B4 Bramlage Family Foundation

USD 475

## **Diamond (\$2,500+)**

Geary County Convention & Visitors Bureau

## **Emerald (\$1,000+)**

D.E.L. Motors

Exchange Bank

Gatherings at 3 Thirteen

Kollhoff Pharmacy

Pottberg, Gassman and Hoffman, CPA

Weary Davis, L.C. Law Firm

## **Ruby (\$500+)**

Bob's Plumbing & Heating

Craft Dentistry

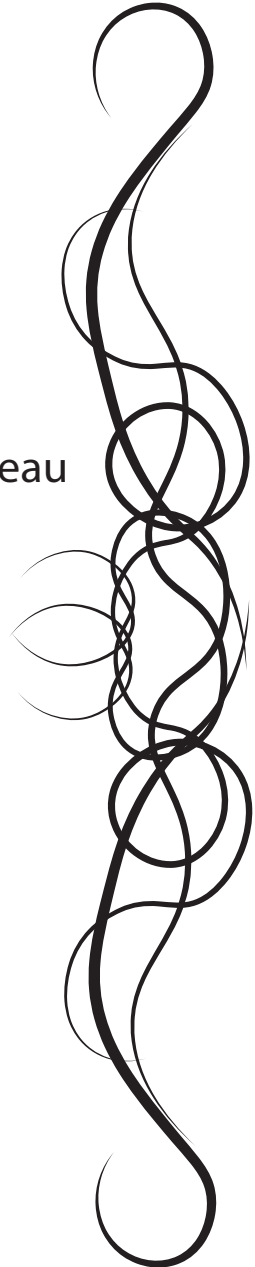
Geary Rehab and Fitness Center

Intrust Bank

O&S Window Cleaning

Stacy's Restaurant

Upland Mutual Insurance



# Let's Be FRIENDS!



Less than 1/4 of our budgeted income comes from ticket sales. The generous gifts FROM PATRONS LIKE YOU make the care and presentation of this historic venue possible!

We invite you to join us! 100% of your tax-deductible contribution will go to support the Opera House throughout the season.

Go to [www.jcoperahouse.org](http://www.jcoperahouse.org) to sign up! Or call (785) 238-3906 and we can sign you up over the phone. We even have a pay per month option!

Thank you for your continued support!

**\$4000+**

**Executive Producer**

**\$1000+**

**Producer**

**\$500+**

**Director**

**\$250+**

**Star**

**\$100+**

**Actor**

**\$50+**

**Stage Manager**

## Friends of the Opera House



### Why should YOU join?

- \* **You Party!** Exclusive Invitation to the Annual Patron Soiree and Friends of the Opera House After Show Reception
- \* **You Feel Good!** The satisfaction that your generous donation enhances lives through live entertainment. Your support helps maintain and enhance this historic venue.
- \* **It's Easy!** Your tax deductible donations can be made at the Box Office or online contribution may be made as a lump sum or as an easy automatic monthly payment.



# Friends of the Opera House



## EXECUTIVE PRODUCERS \$4000+ (or \$350/mo)

Lisa Deibler-Miller

Dave and Suzy Lauseng

Noel Park

Nicole Printz

## PRODUCERS \$1000+ (or \$100/mo)

Virginia Adam

Lennis and Eldon Beichter

Dotty Blacker

Barby Craft

Dr. Mary Devin

Samuel and Margaret Kilpatrick

John and Sue Kollhoff

Ed Kozlowski

Leon and Lisa Osbourn

Karen Salyers

Eunice Rolfs

John and Elaine Rucker

Florence Whitebread

## DIRECTORS \$500+ (or \$50/mo)

Chris and Randy Heldstab

Helen and Dr. John Kovac

Pat and Kelly Landes

Stan and Betty Lewis

Joe and Sheila Markley

Calvin and Shari Pottberg

Linda and Bob Roskens

John and Kathy Triplett

Doug and Janette Vogelsang

Betty Waters

## STARS \$250+ (or \$25/mo)

Ken and Ellie Dillon

Erin Kerbs

Eldon and Sue Steinfort

Mark and Avis Ediger

Robin Mollhagen

Pat Stuckey

Mark and Sally Edwards

Chuck and Nellie Mowry

Jeffery Trotter

Kaye Fisher

Chris and Robert Munson

Russell and Melody Varnado

Heldstab Construction

Jo & Jerry Osbourn

Charles and Kathy Volland

Charles and Laveta Horner

Patricia Reinert

Stuart and Ginger Workman

Skip and Joan Jones

Steve and Angie Roesler

Donna Yenser

LaDonna Junghans

Francis and Phyllis Sanders

## ACTORS \$100+ or \$10/mo

To Honor Dr. Pat and Kelly Landes  
from Barbara and Gilbert Addison

Terry and Peggy Heldstab

Peterson Monuments & Designs

Bayer Construction

Harold and Susan Jagerson

(Lynn Peterson)

Bayer Construction

Vivian Johns

Bill and Carol Powers

Peggy and Ben Bennett

Roberta Kelly

Mike and Sheila Ritchie

Leslie and Rhonda Briggs

Steve and Karen Locke

John and Sharon Strain

Paula and Allen Dinkel

Andrea Mace

Kent Stuckey

Lisa Eickholt

Lois Moon

In Memory of Pat and LeRoy Stuckey

Keith and Phyllis Fitzgerald

John and Susan Moyer

David Walker

Kay Gatz

Judy and Kirk Nafziger

Victor and Sandy Wong

Stan Gauntt

Rebecca Nordyke

Kathy Glessner

Bill and Vannessa Osbourn

## STAGE MANAGERS \$50+ or \$5/mo

Harold and Elaine Becker

Diana Dowling

Roger Elliott

Buck and Phyllis Gibson

Bryson Hayden

Neil Horton

Matthew and Sierra Jackson

Ken and Marcia Mortensen

Mary Kay Munson

Richard and Margie Pinaire

David and Cyndy Platt

Linda Powers

Eunice Polgreen

Peter and Marty Rombold

Judy Rosa

Nancy Sampson

Pat Weber

# Volunteer Opportunities



Each Season, over 100 volunteers give thousands of hours of their time to The Opera House. Whatever your interest, there's a place for you at the C.L. Hoover Opera House.

- \* Box Office
- \* Ushering
- \* Giving Tours
- \* Tending bar
- \* Assisting with stage tech
- \* Distributing Posters
- \* Coat Check

---

## Try Our New Hearing Assist System! Hearing Aid Wearers Will Not Believe Their Ears!



An induction loop is provided for the benefit of hearing aid users. To use please switch your hearing aid to 'T'

The C. L. Hoover Opera House has added a Hearing Loop. This system sends the voices of the performers from our microphones directly into a hearing aid or cochlear implant. The loop provides clear, clean sound and does not require a headset. It works with the **T-Coil** or Telecoil that most hearing aids come equipped with. **The system is available on the main floor, rows C through K (not the first two or last two rows).**

The T-coil is a tiny wireless receiver inside hearing aids and it is accessible via the programming button or switch on you hearing aid. If you have never used your T-coil, it is recommended that you consult your audiologist to confirm it has been activated and to learn how to access it.

If you cannot access your T-coil or do not have hearing aids, please ask the usher for a Receiver and headphones which you can use for today's event.

# A.I.M. Activity. Imagination. Music.

## PRE-K THEATRE PROGRAM

**Wednesday Classes:**

**September 8th-October 13th**

**Thursday Classes:**

**September 9th-October 14th**

CLASS TIMES:

9:30am-10:15am

10:30am-11:15am

## Contact Info:

**Education Director**

**Melissa Ford**

**Phone**

(785-200-4171)

**Email**

ACADEMYjcoh@gmail.com

**Facebook**

<https://www.facebook.com/CLH>

OHJC

## What to Expect:

**A.I.M. is a new Pre-K program coming to the C. L. Hoover Opera House Fall of 2021. For just \$75 dollars this 6 week program includes one class a week for ages 3-5. This 45 minute class will offer a safe and fun space for your young child to learn performance skills (singing, acting and dancing). Your child will learn to use their imaginations through a series of theatre games, storytelling, music and movement. We will also provide a small healthy snack during the class. Email ACADEMYjcoh@gmail.com for more information and to get the enrollment form! Come join the Fun!**



# THE QUEBE SISTERS



*"The Quebe Sisters simply stopped me in my tracks when I heard them the first time.*

*Their blend of swing with a dash of contemporary color is unique in today's music world. They project a cannonball of stage presence and man can they play."*

**JIMMY BUFFETT**

*"The Quebe Sisters are some of the most talented people I've ever met. They do Texas proud. They live in Texas, sound like Texas and they're prettier than Texas Bluebonnets, and sweeter than sugar cane. I love the Quebe Sisters".*

**RICKY SKAGGS**

*"I first heard the Quebe Sisters at the Philly Folk Festival, and was pretty blown away. I begged my manager for years to book some shows with them, and it took a Ray Benson barbecue dinner to realize that dream. Ray connected me with the sisters and we played some songs together in Dallas. It was the highlight of the tour for me. The playing and singing get me in a heavy way. Rich and creamy. Strong and sweet."*

**AMOS LEE**

*"I was stunned when I first heard the Quebe Sisters... They have a wonderful down home delivery that is so sincere and pure, then they blow you away with their super sophisticated vocal harmonies, swinging rhythm section and effortless ability to rip three part fiddle lines with flawless intonation. But even more important than their incredible display of musical virtuosity, they take you on a journey... You will laugh out loud, feel nostalgic, contemplate the wonder of life, fight back the tears, and everything in between. Their ability to transport listeners in this way is rarely seen in such young musicians. I tell everyone I know to go see this band!"*

**JIMMY HERRING**  
MEMBER OF WIDESPREAD PAINC

With over fifteen years of touring to date, The Quebe Sisters have delivered their authentic triple fiddle and three-part harmony sound to the concert halls and festivals of North America and Europe.

Grace, Sophia, and Hulda Quebe front an innovative Progressive Western Swing band of archtop guitar, upright bass, fiddles and sibling harmony. The Dallas-based five-piece presents a unique Americana blend of Western Swing, Jazz-influenced Swing, Country, Texas-Style Fiddling, and Western music.

"We differentiate our music as 'Progressive Western Swing' from simply 'Western Swing' because we aren't trying to sound just like Bob Wills," Grace Quebe explains.

"Instead, we continue his vision, playing the style he pioneered in an authentic way by incorporating new genres and songs, interpreting them using our own unique voice through Country instrumentation."

The band's stripped-down acoustic instrumentation breathes new life into seasoned sounds once found in Texas dance halls and honky-tonks. Grace continues, "To us, preserving the tradition of Western Swing isn't about keeping something alive like a relic. Western Swing has always been about innovation."

Innovation has led the sisters to channel the musical connection between danceability and emotiveness, combining old sounds with new feelings and old feelings with new sounds. It's not nostalgia that drives the band as purveyors of Western Swing, but the aspiration to take the music back to its roots and sustain the spirit of Swing.

Combine the musical stylings of The Mills Brothers, Ray Price, Count Basie, Willie Nelson, and you have none other than The Quebe Sisters.

## NOTABLE APPEARANCES

- Lincoln Center
- Kennedy Center
- Prairie Home Companion
- National Folk Festival
- Meyerson Symphony Center (DSO Pops)
- Austin City Limits w/Asleep at the Wheel
- Grand Ole Opry
- Ryman Auditorium
- Stagecoach Festival
- Cambridge Folk Festival
- Cayamo Cruise
- Many European countries that include England, Scotland and Russia

## BOOKING

New Frontier Touring  
Agent: Paul Lohr  
[paullohr@newfrontiertouring.com](mailto:paullohr@newfrontiertouring.com)  
  
Trip Brown (PACs)  
[tbrown@newfrontiertouring.com](mailto:tbrown@newfrontiertouring.com)

## PUBLICITY

Michael J. Media Group  
Publicist: Mike Farley  
[mike@michaeljmedia.com](mailto:mike@michaeljmedia.com)

# THE QUEBE SISTERS



## Band Members

Grace Quebe - Fiddle - Vocal

Sophia Quebe - Fiddle - Vocal

Hulda Quebe - Fiddle - Vocal

Simon Stipp - Guitar

Daniel Parr - Bass

## Songs

Every Which-a-Way

Please Don't Talk About Me When I'm Gone

Tumbling Tumbleweeds

Teardrops from my Eyes

Pierce the Blue

Bluegrass in the Backwoods

Timber Trail

Opportunity to Cry

My Love, My Life, My Friend

Moonglow

Rainbow over the Range

Twilight on the Trail

Speed the Plow

Lonesome Road

Shame on You

Waltz You Saved for Me

Across the Alley from the Alamo

Trouble in Mind

Load at 7 (Leave at 8)

Goin' Away Party

Leavin' and Sayin' Goodbye

Crazy

Lullaby of the Leaves

Swingin the Bow

Summer of Roses

It's a Sin to tell a Lie

# KOLLHOFF X PHARMACY

Proudly supporting the  
Arts in Junction City!

Accepting Tricare, BCBS & most other plans

We want to be YOUR pharmacy!

407 S Washington  
Junction City, KS  
785-238-1000



Upland Mutual  
Insurance, Inc.

*Serving Kansas Since 1896*



Mary Sanders • Owner

785-238-3039

*Stacy's*  
Restaurant  
"Good Home Cooking"

118 W. Flint Hills Blvd.  
Exit 299  
Grandview Plaza  
Junction City, Kansas  
[www.stacysrestaurant.com](http://www.stacysrestaurant.com)





# *Junction City* GEARY COUNTY KANSAS CONVENTION AND VISITORS BUREAU

## ED.E.L. MOTORS SALES & SERVICE



We offer many makes  
and models to fit  
your vehicle needs.  
Plus 12 months  
**FREE** maintenance !!!

**ED.E.L. MOTORS**  
JUNCTION CITY, KS

[www.delmotors.com](http://www.delmotors.com)  
2549, 1737 N Washington St,  
Junction City, KS 66441  
785-238-5368

# Smithfield.

*Good food. Responsibly.®*

THANK  
YOU!



ROBBY'S FAMOUS CHEESECAKES



# Contact Us

(785) 238-3906

[www.jcoperahouse.org](http://www.jcoperahouse.org)

Joe Markley

Director

[director@jcoperahouse.org](mailto:director@jcoperahouse.org)

Sheila Markley

Development Director

[development@jcoperahouse.org](mailto:development@jcoperahouse.org)

Daniel O'Brien

Director of Operations

[office@jcoperahouse.org](mailto:office@jcoperahouse.org)

Breonna Summers

Marketing Director

[marketing@jcoperahouse.org](mailto:marketing@jcoperahouse.org)

Steve Seitz

Technical Director

[tech@jcoperahouse.org](mailto:tech@jcoperahouse.org)

DeGe Boller

Support Services





# PGH

Certified Public Accountants

816 N Washington St  
Junction City, KS 66441

(785) 238-5166

[www.pgh-cpa.com](http://www.pgh-cpa.com)

---

## Weary Davis, LC

1917 100 YEARS 2017

ATTORNEYS AT LAW  
*ESTABLISHED 1917*

Observing **100 years** of service.

To learn more about the Firm and its attorneys  
visit our website at [www.wearydavis.com](http://www.wearydavis.com).

# What else is happening at The Opera House?



Did you know that this beautiful historic building houses two galleries, Junction City Arts Council, Junction City Little Theater and Junction City Community Band?

On any given day.....

- \* Theater auditions
- \* Rehearsals
- \* Art Classes
- \* Productions
- \* Baby Showers
- \* Wedding Rehearsals
- \* Civic group meetings
- \* Gallery visitors
- \* New Gallery installations
- \* Studio time
- \* Tours



Every day the C.L. Hoover Opera House supports art, youth, community, and cultural experience for the citizens of Junction City, Geary County, and the surrounding area.

What can the Opera House do for you?





# Opera House Board of Directors



Florence Whitebread, Chairperson  
Janette Vogelsang, Vice-Chairperson  
Lisa Osbourn, Treasurer  
Theresa Bramlage  
Barby Craft  
Mary Devin  
Justin Hoover  
Brad Johnson  
Margaret Kilpatrick  
Helen Kovac  
John York



**O&S Window Cleaning**

The Choice is **CLEAR!**

**785.226.6119**

**P.O. Box 714 Junction City, KS 66441**

FEMALE COMIC OF THE YEAR

**Etta May**

**Comedian**

**Southern-Fried  
Humor**



**NOVEMBER 18 7PM**

**LIVE** at The C.L. Hoover Opera House!

GET YOUR TICKETS AT

[WWW.JCOPERAHOUSE.ORG](http://WWW.JCOPERAHOUSE.ORG) OR CALL 785-238-3906!



est. 1894

# EXCHANGE BANK

*relationships you can bank on.®*

## Free Checking

24-hour online banking  
No minimum balance required

## Home Loans

VA & Conventional  
¡Se Habla Español!

## Extended Hours

**Lobby:** Monday—Friday: 8:30am—5pm  
Saturday: 8:30am—12pm

**Drive-up:** Monday—Friday: 7:30—6pm  
Saturday: 8:30—12pm



**702 N. Washington Street**

Junction City, KS 66441

**785-762-4121**

<https://eb-us.com>



***Proud supporter of the C. L. Hoover Opera House***



# Edward Jones

## With Appreciation

Thank you for giving us the opportunity to serve you and your family. We look forward to working together with you toward your financial goals in the future.



**Nicole Printz**

514 N Eisenhower Dr.  
785-762-4440



**Lisa K Deibler-Miller**

325 E. Chestnut St.  
785-238-0044

Financial Advisors, Junction City, KS

[www.edwardjones.com](http://www.edwardjones.com)  
Member SIPC

**Edward Jones**<sup>®</sup>  
MAKING SENSE OF INVESTING



# Banking Products and Services that take Center Stage

*Your Trusted Bank Since 1884*



Central National Bank  
is proud to be a supporter of the  
**Junction City Little Theater**  
and the  
**C.L. Hoover Opera House**

#### **We offer:**

Personal/Commercial Checking & Savings • Home & Business Loans  
Insurance Services • Trust & Wealth Management Services

802 N. Washington St.  
540 W. 6<sup>th</sup> St.  
116 W. 8<sup>th</sup> St.  
Walmart Supercenter  
1801 W. Ash St.  
**(785) 238-4114**

[www.centralnational.com](http://www.centralnational.com)



**Central  
National Bank**  
*Money for Life*



Member FDIC

Equal Housing Lender \*Insurance and Investment Products are NOT FDIC Insured.